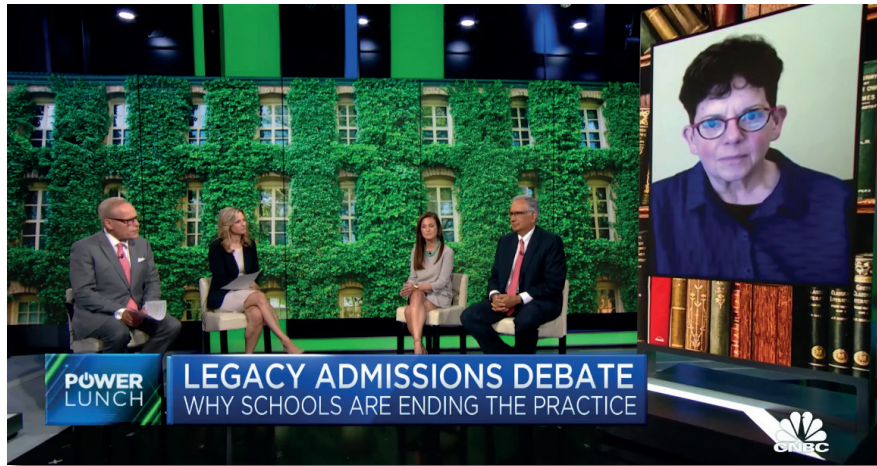


QUIZ

DEBATE OVER LEGACY ADMISSION



- 1. Which sentence is true about legacy admissions?**
 - a) The Supreme Court has made them illegal.
 - b) They are a way of trying to create more diversity in education.
 - c) They are based on families' relations with certain education institutes.
- 2. Legacy admissions ...**
 - a) are as strong as ever.
 - b) are less common than in the past.
 - c) have been abandoned by all prestigious schools.
- 3. Who are alumni?**
 - a) members of the teaching faculty
 - b) students with special privileges
 - c) former students of well known schools or universities
- 4. What does Biddy Martin mean by 'level the playing field'?**
 - a) change everything radically
 - b) create more equal conditions
 - c) preserve traditions
- 5. Sara Harberson says that ...**
 - a) legacy students are now at a disadvantage concerning admissions.
 - b) the idea of legacy is out of date.
 - c) it is very difficult to compare candidates with different backgrounds.

SOLUTIONS: 1. c - 2. b - 3. c - 4. b - 5. c